

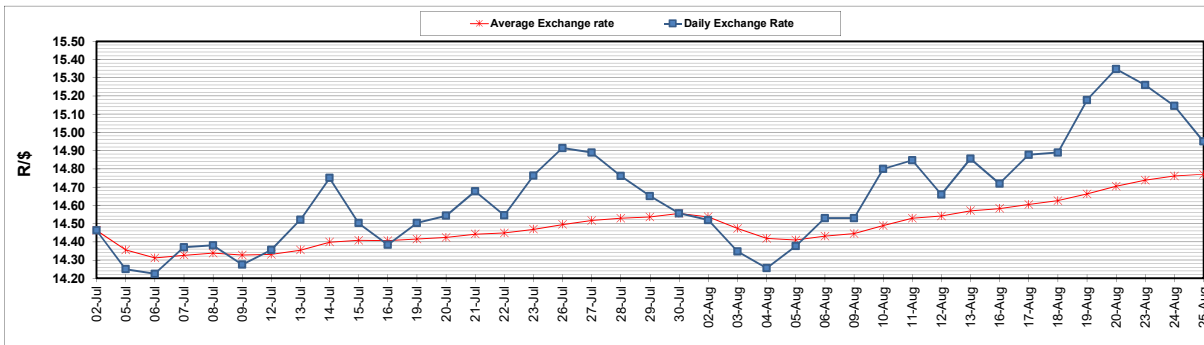
	PETROL 95 ULP	PETROL 93 ULP & LRP	DIESEL 0.05%	DIESEL 0.005%	ILL. PAR.
GAUTENG PUMP PRICE (SA c/l) AS FROM 04/08/2021	1,830.000	1,811.000	-	-	-
WHOLESALE PRICE (SA c/l) AS FROM 04/08/2021	-	-	1,564.200	1,566.600	963.488
SINGLE NATIONAL MAXIMUM RETAIL PRICE	-	-	-	-	1,217.000
BASIC FUEL PRICE - 25/08/2021 (SA c/l)	808.274	797.589	745.683	747.778	743.226
PRESS RELEASE CONTRIBUTION TO BFP 04/08/2021 - 25/08/2021 (SA c/l)	827.590	818.590	770.630	773.030	750.128
UNIT OVER/(UNDER) RECOVERY - 25/08/2021 (SA c/l)	19.316	21.001	24.947	25.252	6.902
AVERAGE BASIC FUEL PRICE 30/07/2021 - 25/08/2021	803.798	791.001	738.615	741.619	725.990
AVERAGE UNIT OVER/(UNDER) RECOVERY 30/07/2021 - 25/08/2021	10.463	14.259	24.278	23.832	16.244

ANALYSIS MOVEMENT OF AVERAGE OVER/(UNDER) RECOVERY

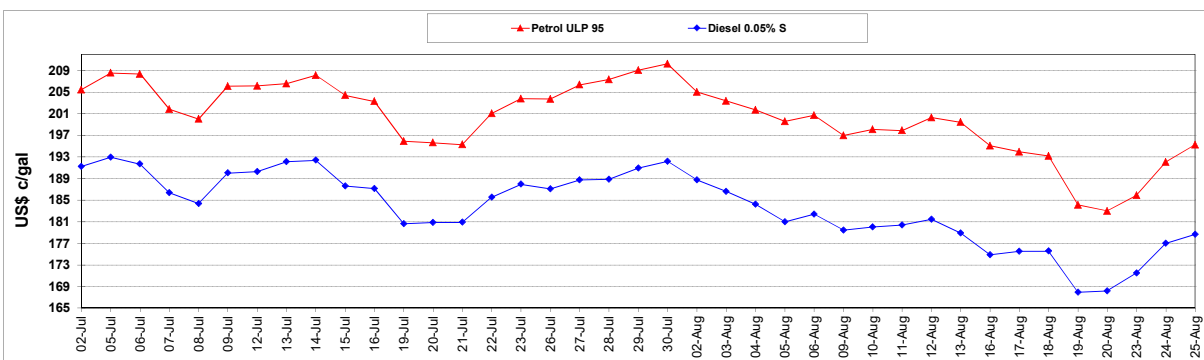
	PETROL 95	PETROL 93	DIESEL 0.05%	DIESEL 0.005%	ILL. PAR.
- MOVEMENT IN INTERNATIONAL PRODUCT PRICES	23.235	26.829	36.014	35.616	27.779
- MOVEMENT IN EXCHANGE RATE	(12.772)	(12.569)	(11.736)	(11.784)	(11.536)
AVERAGE UNIT OVER/(UNDER) RECOVERY 30/07/2021 - 25/08/2021	10.463	14.259	24.278	23.832	16.244

R/\$ EXCHANGE RATE - (R/\$14.9500- 25/08/2021)

EXCHANGE RATE USED IN BASIC FUEL PRICE



INTERNATIONAL PRODUCT PRICES OF BASKET USED IN BASIC FUEL PRICE



BASIC FUEL PRICE IN SA CENTS PER LITRE

